

2012 ABF Asian Championships - 1536



Oil Pattern Distance:	36 Feet	Reverse Brush Drop:	30 Feet	Oil Per Board:	50 uL
Forward Oil Total:	14.85 mL	Reverse Oil Total:	11.15 mL	Volume Oil Total:	26 mL
Forward Boards Crossed:	297 Boards	Reverse Boards Crossed:	223 Boards	Total Boards Crossed:	520 Boards

	Start	Stop	Loads	Speed	Crossed	Start	End	Feet	T.Oil
1	2L	2R	4	14	148	0.0	5.9	5.9	7400
2	3L	3R	1	18	35	5.9	8.4	2.5	1750
3	4L	4R	1	18	33	8.4	10.9	2.5	1650
4	5L	5R	1	18	31	10.9	13.4	2.5	1550
5	7L	7R	1	18	27	13.4	15.9	2.5	1350
6	9L	9R	1	18	23	15.9	18.4	2.5	1150
7	2L	2R	0	22	0	18.4	36.0	17.6	0

Conditioner:
Infinity

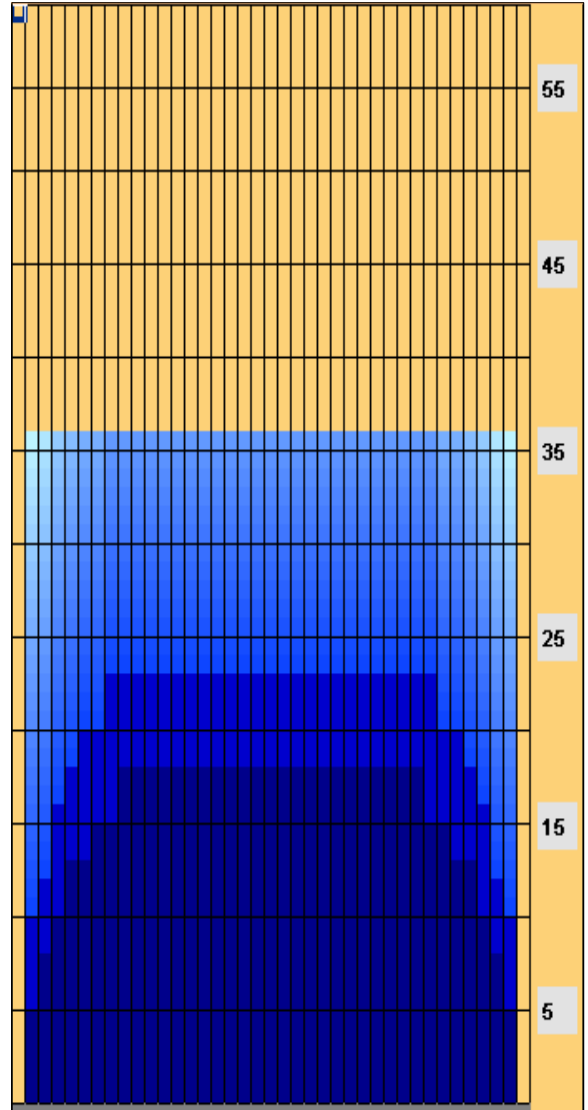
TransferType:
Transfer Brush

Forward

Reverse

Combined

Buff



Forward Reverse More

	Start	Stop	Loads	Speed	Crossed	Start	End	Feet	T.Oil
1	2L	2R	0	30	0	36.0	23.0	-13.0	0
2	8L	8R	1	18	25	23.0	20.5	-2.5	1250
3	6L	6R	1	18	29	20.5	18.0	-2.5	1450
4	5L	5R	1	18	31	18.0	15.5	-2.5	1550
5	4L	4R	2	14	66	15.5	11.6	-3.9	3300
6	3L	3R	1	14	35	11.6	9.7	-1.9	1750
7	2L	2R	1	14	37	9.7	7.8	-1.9	1850
8	2L	2R	0	14	0	7.8	0.0	-7.8	0

Forward Reverse More

Lane Surface - AMF SPL

Item	3L-7L:18L-18R	8L-12L:18L-18R	13L-17L:18L-18R	18L-18R:17R-13R	18L-18R:12R-8R	18L-18R:7R-3R
Description	Outside Track:Middle	Middle Track:Middle	Inside Track:Middle	Middle: Inside Track	Middle:Middle Track	Middle:Outside Track
Track Zone Ratio	1.43	1.01	1	1	1.01	1.43

